

# "Alabama, Mother Mine," Resident in the Kingdom of Cotton

William Underwood Eiland



Augustus Edwin John  
*Portrait of Tallulah Bankhead*, 1930  
Oil on canvas  
48  $\frac{3}{4}$  x 24  $\frac{3}{4}$  in.  
National Portrait Gallery



Nicola Marschall

*Samuel Lockett, 1864*

Oil on canvas

29 x 24.5 in.

Alabama Department of Archives and History



Nathan and Joseph Negus  
*William McIntosh*, 1821  
Oil on canvas  
Alabama Department of Archives  
and History





Artist unknown

*Sara Louise Glover*, ca. 1842

Oil on canvas

38 ½ X 33 ½ in.

Alabama Department of Archives and History



MISTIPPEE.

DESIGNED BY F. W. CHERRILL, PHILADELPHIA.  
FROM A PAINTING BY A NATIVE AMERICAN, LITHOGRAPHED BY J. C. CHERRILL, PHILADELPHIA.  
Engraved according to order of Congress in the Year 1810 by J. C. Cherrill at the Office of the Secretary of War.

*Mistippee*  
Lithograph  
Alabama Department of Archives and History



YOHOLO MICCO.

A CREEK CHIEF.

PUBLISHED BY P. W. CHENEVIX DE POULLEY

From a portrait of Yoholo Micco, an illustration of the Creek Chief, Yoholo Micco, as he appeared in 1834.

Engraved according to an original portrait of the Creek Chief, Yoholo Micco, as he appeared in 1834.

*Yoholo Micco, a Creek Chief*

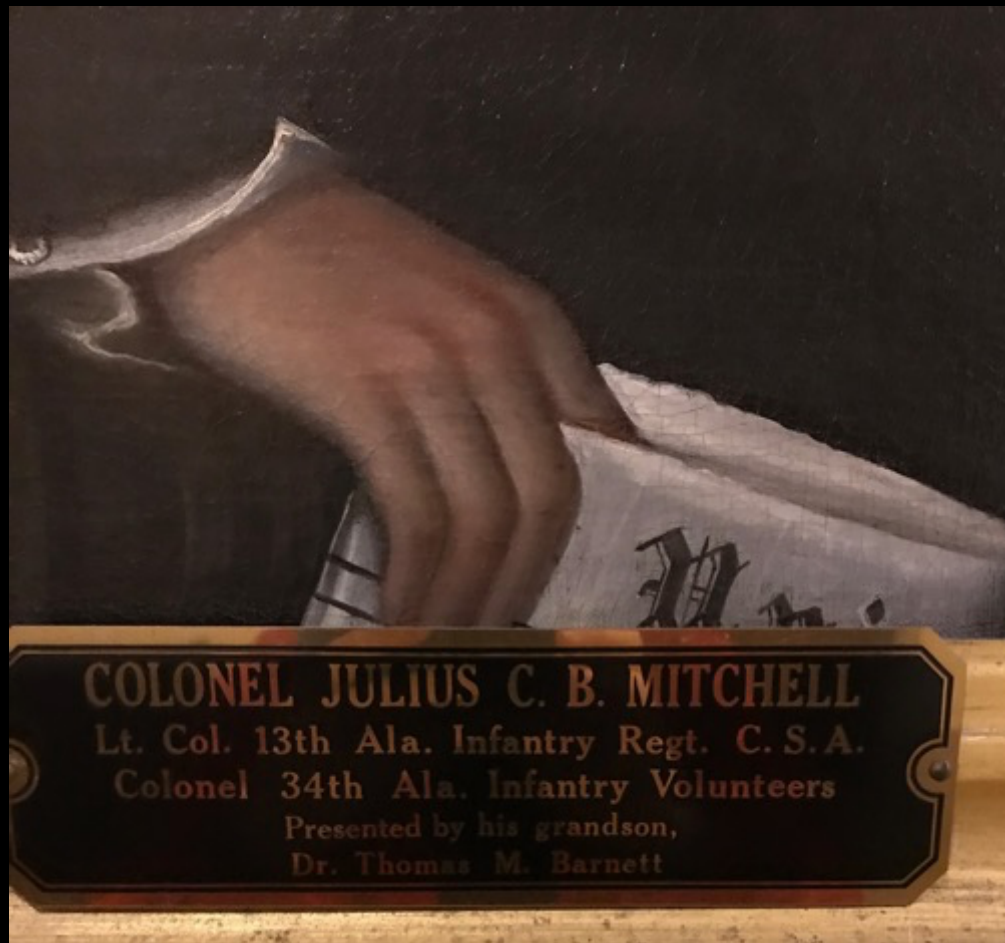
Lithograph

Alabama Department of Archives and History





Joseph Thoits Moore  
*Crawford Motley Jackson*, ca. 1836  
Oil on canvas  
44  $\frac{3}{4}$  X 39  $\frac{1}{4}$  in.  
Alabama Department of Archives and History



Joseph Thoits Moore  
*Julius Caesar Bonaparte Mitchell*, 1837  
Oil on canvas  
33  $\frac{3}{4}$  X 27  $\frac{1}{4}$  in.  
Alabama Department of Archives and History





*Joshua Lanier Martin and Sarah Ann Martin, 1840.*  
Taken in Tuscaloosa by Dr. W. H. Harrington and Professor Frederick Augustus Porter Barnard of the University of Alabama. Daguerreotype photographs, 3.2 x 7.4 inches, collection of the Alabama Department of Archives and History.



Joseph Bush (attb.)  
*Virginia (Tuntstall) Clay-*  
*Clopton*, ca. 1843  
Oil on canvas  
36 ¼ X 29 3/8 in.  
Alabama Department of  
Archives and History





Kathryn Windham



Artist unknown  
*View of Montgomery*, ca. 1870-1880  
Oil on canvas  
36 ½ x 60 1/8  
Birmingham Museum of Arts



Nicola Marschall

*James Madison Cocke, 1863*

36 ½ X 29 in.

Oil on canvas

Alabama Department of Archives and History





Plaques  
6<sup>th</sup>-4<sup>th</sup> century BCE  
Egyptian  
Metropolitan Museum of Art



Portrait bust of Emperor Caligula  
CE 37-41  
Metropolitan Museum of Art



Unidentified maker, Hadda region  
of Afghanistan  
*Head of Buddha*, 400-500 CE  
Georgia Museum of Art



Agnolo Bronzino  
*Portrait of Cosimo de' Medici*,  
ca. 1565-1569  
Oil on tin  
16 x 12.5 cm.  
Uffizi Gallery





Agnolo Bronzino  
*Eleonora of Toledo, 16<sup>th</sup>*  
*century*  
Oil on canvas  
Palazzo Pitti





Jan van Eyck

*Arnolfini Portrait*, 1434

Oil on board

32 x 23 in.

National Gallery, London





Annibale Carracci  
*Butcher's Shop*, ca. 1580s  
Oil on canvas  
185 x 266 cm.  
Christ Church Picture  
Gallery, Oxford





Caravaggio  
*Conversion on the Way to  
Damascus, 1601*  
Oil on canvas  
91 x 69 in.  
Santa Maria del Popolo, Rome





Antoine Watteau  
*Pilgrimage to Cythera*, 1717  
Oil on canvas  
50.7 x 73.6 in.  
Louvre



Artist unknown

*Mrs. George Gaines*, ca. 1830

Oil on canvas

30 1/8 X 25 1/8 in.

Alabama Department of Archives and History





Artist unknown

*Samuel Goode Jones*, ca. 1850

Oil on canvas

30 X 25 1/8 in.

Alabama Department of Archives and History



Rembrandt Peale (attb.)

*Oliver Fitts*, ca. 1809

Oil on canvas

34 X 27 in.

Alabama Department of Archives and History



Thomas Sully  
*Mrs. Robert Gilmor, Jr. (Sarah  
Reeve Ladson)*, 1823  
Oil on canvas  
The Gibbes Museum of Art





Drawn from Nature by J. J. Audubon, F.R.S. P.S.A.

*Columbian Hummingbird.*  
**TROCHILUS ANNA, Fourn.**  
*L. L. S. S. Males. S. Females and Nest.*  
*Plant. Robinsonia pygmaea.*

Engraved, Printed and Coloured by Bell & Birch: 1848.

Illustration of hummingbirds in John James Audubon's *Birds of America*.



Joseph Thois Moore  
*Andrew Dexter, 1833*

Oil on canvas  
34 1/8 X 28 1/8 in.

Alabama Department of Archives and History



Nicola Marschall

*Reverend Alexander Graham*, 1853

Oil on canvas

30 X 25 in.

Alabama Department of Archives and History





George Cooke  
*Interior of St. Peters*, 1847  
17 x 23 ½ ft.  
Chapel, University of Georgia,





Edward Troye  
*Self Portrait*, 1852  
Oil on canvas  
38 x 54 in.  
Yale University Art Gallery,  
New Haven.





Edward Troye  
*Richard Singleton*, n.d.  
Oil on canvas  
24 x 29 in.  
Location unknown





Joseph Thoits Moore

*James Jackson*, 1820

Oil on canvas

36 ½ X 31 ¼ in.

Alabama Department of Archives and History



Joseph Thoits Moore

*Robert D. Thorington, 1835*

Oil on canvas

33  $\frac{3}{4}$  X 28  $\frac{3}{8}$  in.

Alabama Department of Archives and History



Nicola Marschall  
*Self Portrait*, 1867  
Alabama Department of Archives and History





Nicola Marschall  
*Untitled (Caroline Carlisle as a baby and her mother)*, ca. 1856  
Private collection

# The Three "Stars and Bars" designs submitted to the Provisional Confederate Congress by Nicola Marschall



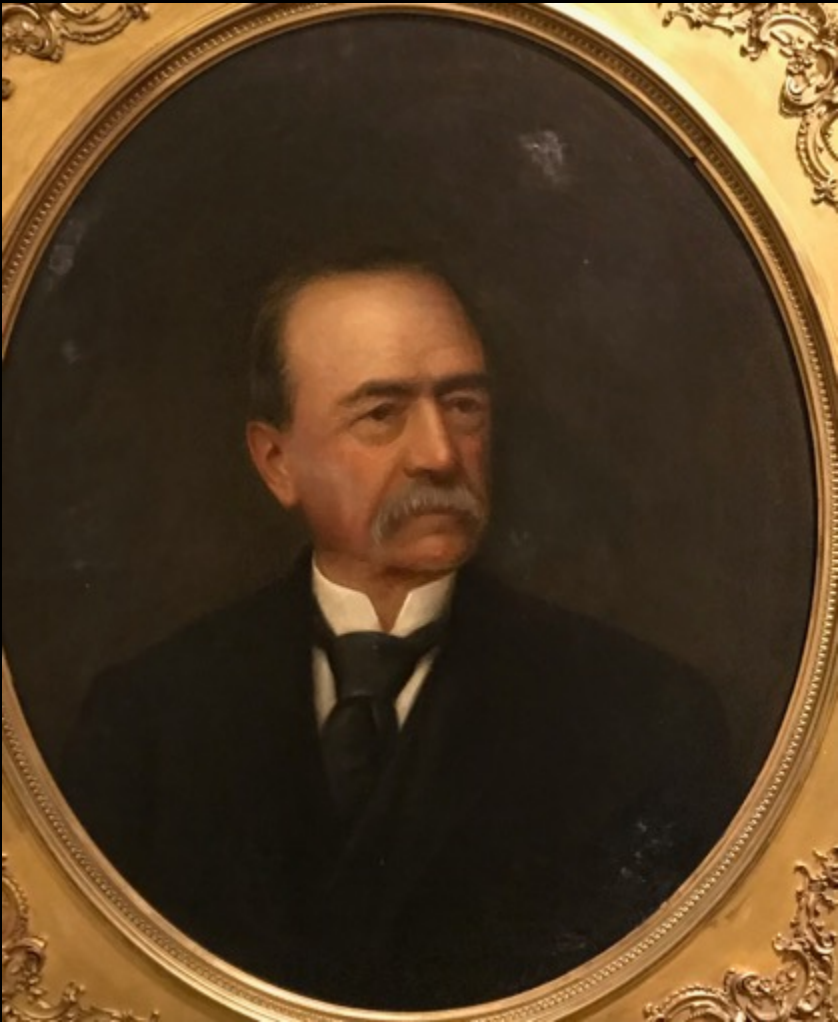
**Winning design**





Nicola Marschall  
*Untitled (Unknown Gentleman)*, n.d.  
Private collection





Nicola Marschall

*Self portrait*, signed "Nicola Marschall X-Mas, 1893"

Oil on canvas

42 ½ X 38 in.

Alabama Department of Archives and History



Nicola Marschall  
*The Hale Child*, 1863  
Private Collection



Thomas C. Healy

*Maude & Ida Walker*, 1850

Oil on canvas

25 x 30 in.

Alabama Department of Archives and History





George Cooke

*Joseph Fairfax Lapsley*, 1848

Oil on canvas

51 x 42 in.

The Johnson Collection, Spartanburg, SC



Nicola Marschall  
*Hetta Schmidt*, 1864

Oil on canvas  
24 x 19.5 in.

Alabama Department of Archives and History





Artist unknown

*Eliza Baker*, ca. 1835

Oil on canvas

52 5/8X 36 1/4 in.

Alabama Department of Archives and History





Slave-made quilt, ca. 1830  
Private Collection



Mary Lee Bendolph  
*Grandma Strips*, 2009  
Cotton  
75 x 77 inches



Joseph Thoits Moore  
*Henry W. Hilliard, 1836*

Oil on canvas

50 ¼ X 40 in .

Alabama Department of Archives and History





Artist unknown  
Mrs. Nathan S.S. Beman, n.d.  
Oil on canvas  
30 X 23 ½ in.  
Alabama Department of Archives and History





Artist unknown

*Sofie Bibb Shorter Lomax*, ca. 1849

Oil on canvas

36 ½ X 29 in.

Alabama Department of Archives and History



Chester Harding (attb.)

Mary Ann Battle Collier & Children, ca. 1830

(Mary, Evelyn, James, & Sallie)

Oil on canvas

35 7/8 X 27 3/4 in.

Alabama Department of Archives and History



Thomas Sully

*Portrait of Octavia Walton LeVert,*  
*"Miss Walton of Florida," 1833*

*Oil on canvas*

Historic Mobile Preservation Society,  
Oakleigh Museum





Artist unknown  
*Marquis de Lafayette*, n.d.  
Oil on canvas  
Library of Congress Prints and  
Photographs Division



Thomas Sully

*Portrait of Octavia Walton LeVert,*  
*“Miss Walton of Florida,” 1833*

*Oil on canvas*

Historic Mobile Preservation Society,  
Oakleigh Museum



Artist unknown

Mrs. Richard Brickell (Margaret Williamson Coman), ca. 1855

Oil on canvas

30 ¼ X 25 in.

Alabama Department of Archives and History



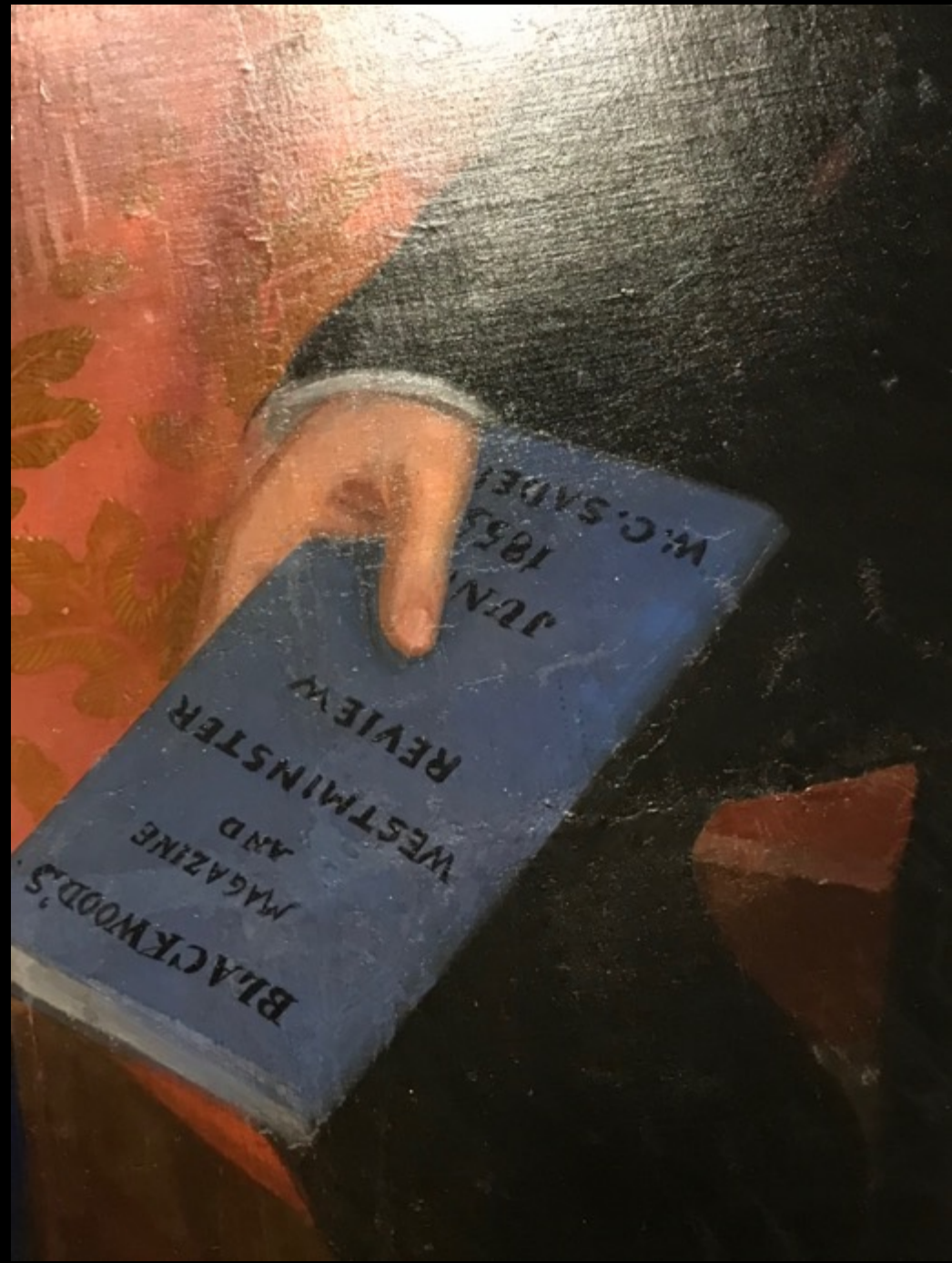


Phillip Romer  
*Choctaw Belle*, 1850  
Oil on canvas  
30 x 25 in.  
Washington and Lee University



William Carroll Saunders  
*Colonel George Washington Foster and  
Jane Edwards Draughon Foster, ca. 1854*  
Oil on canvas  
84 x 65 inches  
Alabama Department of Archives and  
History









George Cooke  
*Interior of St. Peters*, 1847  
17 x 23 ½ ft.  
Chapel, University of Georgia,



William Frye

*Portrait of Miss Ellie Lowe*, 1858

Oil on canvas

36x 29 in.

Huntsville Museum of Art





William Frye  
*View of Selma and the Alabama  
River*, ca. 1850  
Selma/Dallas County Public Library,  
Selma, Alabama





William Frye  
*Portrait of Henry Clay*, 1865  
Oil on canvas  
Kentucky Historical Society



William Frye  
*Portrait of African American Man*, n.d.  
Oil on canvas  
Location unknown



Artist unknown

*Martha Goode Jones*, ca. 1850

Oil on canvas

30 X 25 in.

Alabama Department of Archives and History





C.R. Parker  
*Emily Virginia Scott Pollard*, 1834  
Oil on canvas  
35 ½ X 27 ½ in.  
Alabama Department of Archives and History





Adrian P. Thompson  
*Caroline Billingsley Shorter Lomax*, 1850  
Oil on canvas  
38 ½ X 30 in.  
Alabama Department of Archives and History











Nicola Marschall

*Emma Elizabeth England*, 1866

Oil on canvas

28 x 23 ½ in.

Alabama Department of Archives and History





Nicola Marschall

*Zitella Cocke*, ca. 1869

Oil on canvas

30 1/8 X 25 in.

Alabama Department of Archives and History

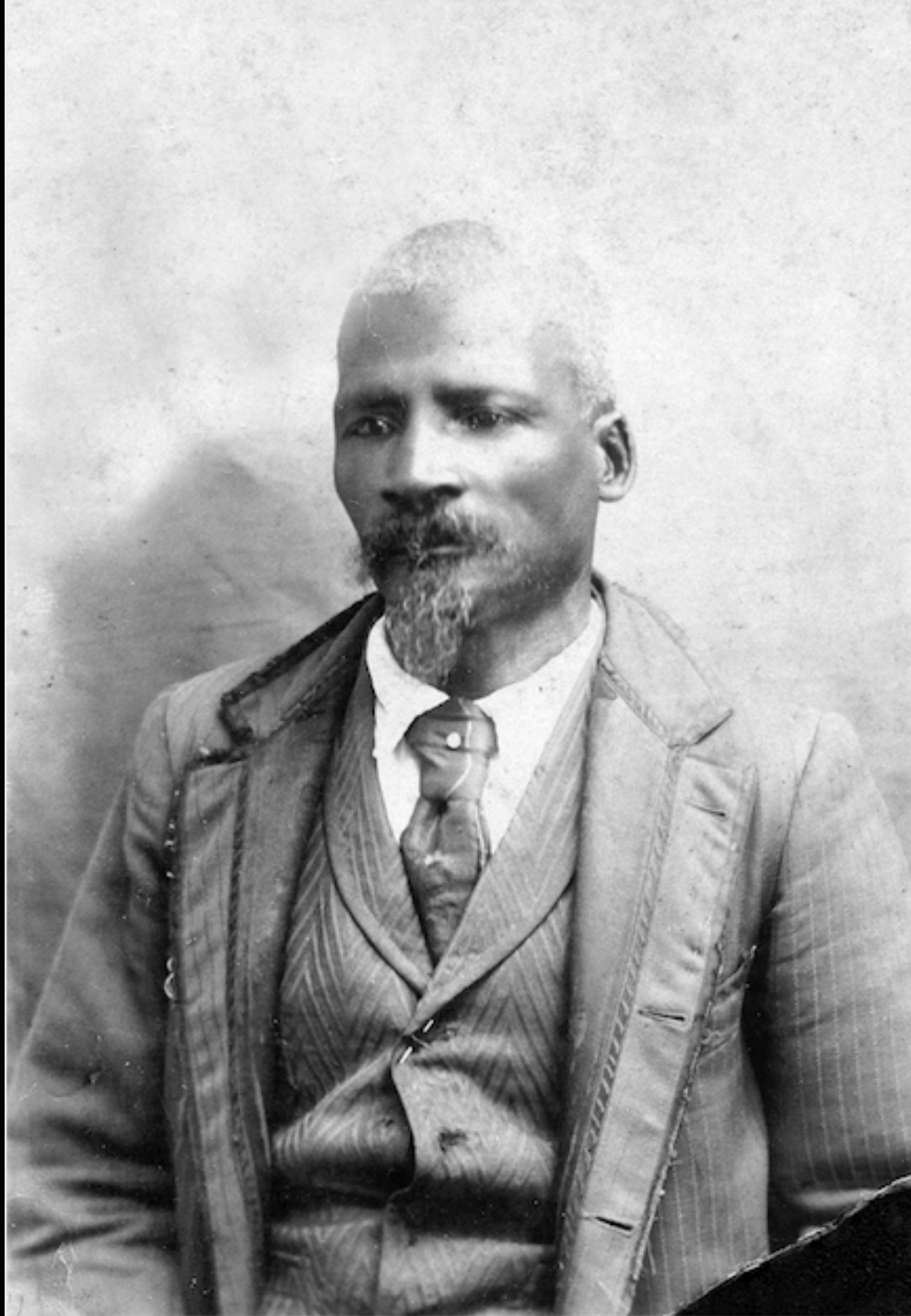




Jeremiah Theus  
*Portrait of John Habersham, 1772*  
Oil on canvas  
Georgia Museum of Art



*Joshua Lanier Martin and Sarah Ann Martin, 1840.*  
Taken in Tuscaloosa by Dr. W. H. Harrington and Professor Frederick Augustus Porter Barnard of the University of Alabama. Daguerreotype photographs, 3.2 x 7.4 inches, collection of the Alabama Department of Archives and History.



James N. Byrd

*Elderly Man*, Early 20<sup>th</sup> Century

Mounted gelatin silver print

6 <sup>3</sup>/<sub>4</sub> x 4 <sup>1</sup>/<sub>4</sub> in.

Department of Archives and  
Manuscripts, Birmingham, Alabama,  
Public Library: gift of James Walker.

Alabama's earliest known photograph  
by a black photographer.





Samuel F. B. Morse  
*Portrait of Mrs. Catherine Munro*, 1818  
Oil on canvas  
35 5/8 x 29 5/8 in.  
Georgia Museum of Art



Clara Weaver Parrish  
*Untitled*, n.d.  
Private Collection





John Lapsley  
*Untitled*, n.d.  
Private Collection





Crawford Gillis  
*Chopping Cotton*, n.d.  
Private Collection





Anne Goldthwaite  
*Untitled (Street Scene)*, n.d.  
Etching  
9 ½ x 7 ½ in.  
Georgia Museum of Art



Charles Shannon  
*Negro Spiritual*, ca. 1938  
Oil on canvas  
33 ½ x 24 in.  
Georgia Museum of Art





Walker Evans  
*Spratt Store, 1936*  
Private Collection



Artist unknown

*Jeremiah Clemens*, n.d.

Oil on canvas

30 X 25 in.

Alabama Department of Archives and History



Nicola Marschall

*Cornelia Clark Lockett*, 1864

Oil on canvas

29.5 x 24.5 in.

Alabama Department of Archives and History





Walker Evans  
*Sprott Store, 1936*  
Private Collection